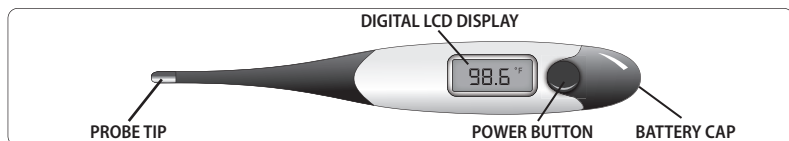




9-SECOND DIGITAL THERMOMETER

MODEL #: 08-359



THANK YOU FOR PURCHASING THIS 9-SECOND DIGITAL THERMOMETER. READ THESE INSTRUCTIONS CAREFULLY TO ENSURE PROPER AND SAFE OPERATION OF YOUR THERMOMETER.

PLEASE READ AND SAVE THESE INSTRUCTIONS

This product is not intended to diagnose or treat any health problem or disease and should not be used as a substitute for the consultation and advice of a physician or other medical professional.

Choking Hazard: thermometers should only be used under the supervision of an adult; removable cap and battery may be harmful if swallowed.

This thermometer should be held during use; the patient should be seated or lying down during readings.

Before use, it is recommended that the patient avoid eating, drinking, smoking or exercising for at least twenty minutes prior to taking a measurement. Never walk, run or talk during a measurement.

FAHRENHEIT CELSIUS SWITCHABLE FEATURE

This unit takes measurements in both Fahrenheit and Celsius. While the unit is OFF, press and hold the **POWER** button. After the brief self-test, the unit will show the last reading in either °F or °C. Continue to hold the **POWER** button, and display will change the mode and display the new temperature reading mode. Release the **POWER** button and begin your reading.

MEMORY RECALL

This unit includes a recall of the last measurement taken. When the unit is OFF, press the **POWER** button to turn the unit on, and release. After the self-test, the unit will briefly show the last reading with an 'M' on the display.

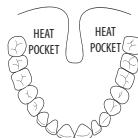
OPERATING INSTRUCTIONS

Wipe or dip the probe tip with isopropyl alcohol to clean before use; apply a probe cover if using. Press and release the **POWER** button to activate the thermometer. The unit will beep and the display will show all of the digital display symbols as it performs a self-test before showing the last reading in memory.

'Lo' with a flashing °F(°C) will appear in the display, followed by a brief flash of 98.6°F(37°C); the display will return to the 'Lo' with flashing °F(°C), indicating that the thermometer is ready for measurement.

ORAL USE

Approximate measurement time: 10-20 seconds — Place the probe under the tongue as near as possible to a heat pocket as noted in the diagram. Readings will be progressively lower the further the probe is from the indicated heat pockets. Hold the thermometer in place during the reading; do not bite down on the thermometer. The mouth must remain closed to ensure accurate results.



UNDERARM (AXILLARY) USE

Approximate measurement time: 20-30 seconds — Place the probe tip under the arm so that the tip is touching skin; hold the thermometer parallel, slightly angled upwards. Position the arm across the chest to ensure the tip is completely covered. Underarm temperature readings are generally 1°F lower than oral readings.



RECTAL USE

Approximate measurement time: 9 seconds — Apply a probe cover and use a water-soluble lubricant for easier insertion. Lay the patient on their side or stomach with their legs hanging down. Gently insert the tip of the probe NO MORE THAN 1 INCH into the rectum; stop immediately if you detect resistance. Always hold the thermometer in place during measurement. Rectal temperature readings are generally 1°F higher than oral readings.

PROBE COVER USE

Disposable, hygienic probe covers are recommended for use with stick thermometers to prevent contamination. Probe covers are intended for one-time use only; a new probe cover should be used with each application. Probe covers can commonly be found at your local mass market or drug-store retailer.

CARE AND CLEANING INSTRUCTIONS

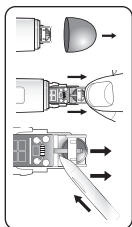
Store the unit in the provided protective case when not in use. Do not store the thermometer where it will be exposed to direct sunlight, dust or humidity. Avoid extreme temperatures. Do not attempt to disassemble the unit. If ERR displays and no measurement can be obtained, the unit must be replaced.

Clean the thermometer by wiping with rubbing alcohol (70% isopropyl alcohol) or soap and water. Do not submerge in any liquid or autoclave. Wipe the thermometer with a dry cloth and allow to air dry.

REPLACING THE BATTERY

The low-battery indicator symbol will appear on the lower right of your display when the battery needs to be changed.

1. Remove the battery cap by pulling gently.
2. Looking at the unit from the back side (ratings label face up) carefully slide the battery tray out so the entire battery is exposed.
3. Remove the battery with a non-metal tool. Do not attempt to remove the thin plastic battery cover bar.
4. Replace the battery with a LR41 alkaline or SR41 silver oxide type battery with the positive (+) side facing up.
5. Carefully replace the battery cap.
6. Do not dispose of used batteries in the trash. Consult your local recycling center for the proper way to dispose of batteries in your area. Keep used batteries away from children, pets and excessive heat.



SPECIFICATIONS

BATTERY:	One 1.5V button size battery LR41 or equivalent
BATTERY LIFE:	Approximately 24 months
AUTOMATIC SHUT-OFF:	Approximately after 10 minutes of non-use
ACCURACY:	$\pm 0.2^{\circ}\text{F}$, 98.0°F - 102.0°F ($\pm 0.1^{\circ}\text{C}$, 37.0°C - 39.0°C) $\pm 0.3^{\circ}\text{F}$, 96.4°F - 98.0°F ($\pm 0.2^{\circ}\text{C}$, 35.8°C - 37.0°C) $\pm 0.3^{\circ}\text{F}$, 102.0°F - 106.0°F ($\pm 0.2^{\circ}\text{C}$, 39.0°C - 41.0°C)
MEASUREMENT RANGE:	90.0°F - 109.9°F (32° - 42.99°C)
OPERATING TEMPERATURE:	50.0°F - 104.0°F (10°C - 40°C)
STORAGE TEMPERATURE:	14.0°F - 140.0°F (-10°C - 60°C)
DISPLAY:	Liquid crystal display
DISPLAY RESOLUTION:	4 digits (1/10th of a degree increments)
DIMENSIONS:	5-1/2" X 7/8" X 3/8"
WEIGHT:	0.38 ounces

Specifications are subject to change without notice.

LIFETIME LIMITED WARRANTY

Your Digital Thermometer is covered by the following limited warranty commencing upon the date of purchase, and subject to the following terms and conditions:

The Warrantor warrants that its Digital Thermometer will be free from defects in materials and workmanship under normal consumer usage for a period of a lifetime for the original purchaser of the Digital Thermometer. This Warranty excludes the included battery.

If the Digital Thermometer fails to conform to this limited warranty, return the Digital Thermometer postage prepaid to:

Attn: Repair Department, 1175 Lakeside Drive, Gurnee, IL, 60031.

Contact Customer Care for further Warranty details.

Toll-Free Customer Care Help Line: 1-866-326-1313
Monday – Friday 8:30 a.m. – 4:30 p.m. CST